



underfloor heating components

A background image showing a worker in a hard hat and work clothes kneeling on a grid of metal reinforcement bars (rebar) laid out on a floor. The worker is focused on a task, possibly related to the underfloor heating components mentioned in the text. The entire image has a blue color overlay.

PRODUCT
CATALOGUE



TACKER CLIPS

TAPED & WELDED

Tacker clips are designed for fixing pipes from diameter of 14 to 22mm. Clips are fixed to the ground manually or with help of tacker gun → see code 104 from our tools. Product is universal and compatible with all types of taker guns available on the market. Staples are in sets of 25 pieces connected together with tape or welded. It is a product with a wide range of applications, primarily in the screeded floor. The pipe system is fastened with clips to Styrofoam with foil. Styrofoam guarantees adequate thermal insulation and the foil acts as an anti-moisture barrier.

13511

TACKER CLIPS CONNECTED WITH TAPE 35 MM



Material Polypropylene black
Insertion depth 17 mm
Dedicated for pipe diameters: ø14,16,17,18, 20mm
Fastened in sets each 25pcs
Packaging: Single pack box 300 pcs / multi pack 20 x box 300 pcs
Pallet: 480 boxes each 300 pcs → 24 multi packs
Pallet dimmension: 1200x800x220mm ; gros weight 230 kg

14011

TACKER CLIPS CONNECTED WITH TAPE 40 MM



Material Polypropylene black
Insertion depth 22 mm
Dedicated for pipe diameters: ø14,16,17,18, 20mm
Fastened in sets each 25pcs
Packaging: single pack box 300 pcs / multi pack 20 x box 300 pcs
Pallet: 480 boxes each 300 pcs → 24 multi packs
Pallet dimmension: 1200x800x220mm ; gros weight 260 kg

14031

TACKER CLIPS THERMALLY WELDED 40 MM



Material Polypropylene black
Insertion depth 22 mm
Dedicated for pipe diameters: ø14,16,17,18, 20mm
Fastened in sets each 25pcs
Packaging: single pack box 300 pcs / multi pack 20 x box 300 pcs
Pallet: 480 boxes each 300 pcs → 24 multi packs
Pallet dimmension: 1200x800x220mm ; gros weight 260 kg

14311

TACKER CLIPS CONNECTED WITH TAPE 43 MM



Material Polypropylene black
Insertion depth 25 mm
Dedicated for pipe diameters: ø14,16,17,18, 20mm
Fastened in sets each 25pcs
Packaging: single pack box 300 pcs / multi pack 20 x box 300 pcs
Pallet: 480 boxes each 300 pcs 24 multi packs
Pallet dimmension: 1200x800x220mm ; gros weight 270 kg

14331

TACKER CLIPS THERMALLY WELDED 43 MM



Material Polypropylene black

Insertion depth 25 mm

Dedicated for pipe diameters: ø14,16,17,18, 20mm

Fastened in sets each 25pcs

Packaging: Single pack box 300 pcs / multi pack 20 x box 300 pcs

Pallet: 480 boxes each 300 pcs → 24 multi packs

Pallet dimmition: 1200x800x220mm ; gross weight 270 kg

15011

TACKER CLIPS CONNECTED WITH TAPE 50 MM



Material Polypropylene black

Insertion depth 30 mm

Dedicated for pipe diameters: ø14,16,17,18, 20mm

Fastened in sets each 25pcs

Packaging: single pack box 300 pcs / multi pack 20 x box 300 pcs

Pallet: 480 boxes each 300 pcs → 24 multi packs

Pallet dimmition: 1200x800x220mm ; gross weight 330 kg

15031

TACKER CLIPS THERMALLY WELDED 50 MM



Material Polypropylene black

Insertion depth 30 mm

Dedicated for pipe diameters: ø14,16,17,18, 20mm

Fastened in sets each 25pcs

Packaging: single pack box 300 pcs / multi pack 20 x box 300 pcs

Pallet: 480 boxes each 300 pcs → 24 multi packs

Pallet dimmition: 1200x800x220mm ; gross weight 330 kg

25011

TACKER CLIPS CONNECTED WITH TAPE 50 MM DOUBLE HOOK



Material Polypropylene black

Insertion depth 30mm

Dedicated for pipe diameters: ø14,16,17,18, 20mm

Fastened in sets each 25pcs

Packaging: single pack box 300 pcs / multi pack 20 x box 300 pcs

Pallet: 480 boxes each 300 pcs → 24 multi packs

Pallet dimmition: 1200x800x220mm ; gross weight 340 kg

25031

TACKER CLIPS THERMALLY WELDED 50 MM DOUBLE HOOK



Material Polypropylene black
Insertion depth 30 mm
Dedicated for pipe diameters: ø14,16,17,18, 20mm
Fastened in sets each 25pcs
Packaging: Single pack box 300 pcs / multi pack 20 x box 300 pcs
Pallet: 480 boxes each 300 pcs → 24 multi packs
Pallet dimmension: 1200x800x220mm ; gross weight 340 kg

16011

TACKER CLIPS CONNECTED WITH TAPE 60 MM



Material Polypropylene black
Insertion depth 40 mm
Dedicated for pipe diameters: ø14,16,17,18, 20mm
Fastened in sets each 25pcs
Packaging: single pack box 300 pcs / multi pack 20 x box 300 pcs
Pallet: 480 boxes each 300 pcs → 24 multi packs
Pallet dimmension: 1200x800x220mm ; gross weight 375 kg

16031

TACKER CLIPS THERMALLY WELDED 60 MM



Material Polypropylene black
Insertion depth 40 mm
Dedicated for pipe diameters: ø14,16,17,18, 20mm
Fastened in sets each 25pcs
Packaging: single pack box 300 pcs / multi pack 20 x box 300 pcs
Pallet: 480 boxes each 300 pcs → 24 multi packs
Pallet dimmension: 1200x800x220mm ; gross weight 375 kg

13522

TACKER CLIPS LOOSE PACKED IN BULK 35 MM



Material Polypropylene black

Insertion depth 17 mm

Dedicated for pipe diameters: \varnothing 14,16,17,18, 20mm

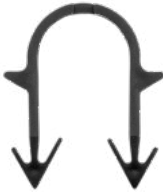
Packaging: loose in bag → 200 pcs / multi pack 30 bags

Pallet: 720 bags each 200 pcs → 24 multi packs

Pallet dimmension: 1200x800x220mm ; gross weight 300 kg

14022

TACKER CLIPS LOOSE PACKED IN BULK 40 MM



Material Polypropylene black

Insertion depth 22 mm

Dedicated for pipe diameters: \varnothing 14,16,17,18, 20mm

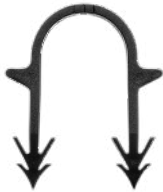
Packaging: loose in bag → 200 pcs / multi pack 30 bags

Pallet: 720 bags each 200 pcs → 24 multi packs

Pallet dimmension: 1200x800x220mm ; gross weight 330 kg

14322

TACKER CLIPS LOOSE PACKED IN BULK 43 MM



Material Polypropylene black

Insertion depth 25 mm

Dedicated for pipe diameters: \varnothing 14,16,17,18, 20mm

Packaging: loose in bag → 200 pcs / multi pack 30 bags

Pallet: 720 bags each 200 pcs → 24 multi packs

Pallet dimmension: 1200x800x220mm ; gross weight 340 kg

15022

TACKER CLIPS LOOSE PACKED IN BULK 50 MM



Material Polypropylene black

Insertion depth 30 mm

Dedicated for pipe diameters: \varnothing 14,16,17,18, 20mm

Packaging: loose in bag → 100 pcs / multi pack 60 bags

Pallet: 600 bags each 100 pcs → 24 multi packs

Pallet dimmension: 1200x800x220mm ; gross weight 355 kg

25022

TACKER CLIPS LOOSE PACKED IN BULK 50 MM DOUBLE HOOK



Material Polypropylene black

Insertion depth 30 mm

Dedicated for pipe diameters: \varnothing 14,16,17,18, 20mm

Packaging: loose in bag \rightarrow 100 pcs / multi pack 60 bags

Pallet: 600 bags each 100 pcs \rightarrow 24 multi packs

Pallet dimmension: 1200x800x220mm ; gross weight 355 kg

16022

TACKER CLIPS LOOSE PACKED IN BULK 60 MM



Material Polypropylene black

Insertion depth 40 mm

Dedicated for pipe diameters: \varnothing 14,16,17,18, 20mm

Packaging: loose in bag \rightarrow 100 pcs / multi pack 60 bags

Pallet: 600 bags each 100 pcs \rightarrow 24 multi packs

Pallet dimmension: 1200x800x220mm ; gross weight 375 kg



UNDERFLOOR HEATING **SYSTEMS** **TOOLS**

104

TACKER GUN



Tacker gun is a device used for mounting to the floor taped or welded clips in sizes 40-43-50-60 mm. It is an universal device, compatible with all types of clips available on the market, because it has the ability to easily adjust the appropriate position of the clips relative to the driving arm. Work with support of tacker gun gives the end user comfort and efficiency of work increase. The device is made of steel and aluminium, it is a solid and damage-resistant construction.

Dimensions: length 900 mm width 200 mm; weight 3,2 kg

Dedicated for pipe diameters \varnothing 14,16,18, 20 mm

Tacker clips / staples to be fixed with tacker gun – see SGI codes:

14011, 14031, 14311, 14331, 15011, 15031, 25011, 25031, 16011, 16031

Packaging 1 piece/box / 80 pieces per pallet

Pallet dimension: 1200x800x150mm ; gross weight 275 kg

Taker regulation – see movie: <https://youtu.be/7m-B2MBkKG0>
(or QR-code)



PIPE DECOILER

Pipe decoiler is used to unwind the pipe from the coil during the installation of the underfloor heating system. The device greatly facilitates the work of the installer, thanks to the placement of the pipe coil on the decoiler, the pipe does not get tangled and does not break. The following product versions are available:

120

PIPE DECOILER STANDARD



Dedicated for pipe diameters \varnothing 14,16,18,20mm

Intended for pipe coils up to 400 meters (\varnothing 16 mm)

Pipe roll dimensions: minimum internal 300 mm –
maximum external 900mm

Decoiler weight 13,50 kg

Maximum pipe coil weight 60 kg

Dimensions when unfolded: diameter 1200 - 1980mm;
height 540-800mm

Material galvanized steel

Packaging single box 240x180x700 – 1 piece / pallet 40 pieces

120H

PIPE DECOILER STANDARD VERSION HEAVY



Dedicated for pipe diameters \varnothing 14,16,18,20mm

Intended for pipe coils up to 600 meters (\varnothing 16 mm)

Pipe roll dimensions: minimum internal 300 mm – maximum external 900 mm

Decoiler weight 15,00 kg

Maximum pipe coil weight 80 kg

Dimensions when unfolded: diameter 1200 - 1980mm; height 540-800mm

Material galvanized steel

Packaging single box 240x180x700 – 1 piece / pallet 40 pieces

120K

ARM FOR PIPE DECOILER WITH EYELET



Enhance your decoiling process with our arm accessory for the SGI decoiler (codes 120 & 120H). It features a special eyelet to facilitate swift and easy pipe uncoiling, simultaneously pre-straightening the pipe for hassle-free installation and securing on floor systems.

Dimensions height 370 mm; length 400mm; width 80mm

Material chrome steel

Weight 1,5 kg net

Packaging 1 piece per box / pallet 200 pieces

120HW

PIPE DECOILER WITH ARM HEAVY



Reinforced with internal arm allowing to unwind the pipe coil

Dedicated for pipe diameters \varnothing 14,16,18,20mm

Intended for pipe coils of up to 600 meters (\varnothing 16 mm)

Pipe roll dimensions: minimum internal 300mm – maximum external 900mm

Decoiler weight 16,00 kg

Maximum pipe coil weight 80 kg

Dimensions when unfolded: diameter 1200 - 1980mm; height 540-800mm

Material galvanized steel

Packaging single box 240x180x700 – 1 piece / pallet 40 pieces

124

PIPE DECOILER STANDARD VERSION HEAVY



Dedicated for pipe diameters $\varnothing 14, 16, 18, 20\text{mm}$
Intended for pipe coils of up to 800 meters ($\varnothing 16\text{ mm}$)
Pipe roll dimensions: minimum internal 300mm – maximum external 1000mm
Decoiler weight 25,00 kg
Maximum pipe coil weight 80 kg
Dimensions: high 118 cm x width 75 cm x depth 82 cm
Material galvanized steel
Packaging single box 240x180x700 – 1 piece / pallet 9 pieces

150

PIPE STRAIGHTENER



Designed for PEX, PERT, PEX-AL-PEX pipes of diameter $\varnothing 14, 16, 18, 20, 25\text{mm}$
Bearing rollers provide appropriate precise pressure, thanks to which the pipe is well straightened along its entire length
Application on pipe decoiler 120;120H → with an help of arm SGI code 120P
Material aluminium and chrome steel
Dimensions height 250mm, length 230mm width 60mm
Weight 4,00 kg net
Packaging 1 piece per box / pallet 100 pieces

120P

ARM FOR PIPE STRAIGHTENER



Designed for seamless integration with both standard and heavy SGI decoilers (codes 120 & 120H), this adapter arm allows for the attachment of a straightening machine (SGI code 150) directly to the unwinder. By mounting to the unwinder's arm with a foot, it significantly simplifies the process of uncoiling and straightening tubes, enhancing efficiency and ease of pipe installation.

Dimensions: height 370 mm, length 400 mm, width 80 mm
Material: chrome-plated steel
Weight 1,0 kg net
Packaging 1 piece per box / pallet 200 pieces

160

PIPE DECOILER STANDARD VERSION HEAVY



It is a 2in1 device, designed for calibrating and simultaneous chamfering of the PEX, PERT, AL-PEX, AL-PERT pipes, before inserting the connector.

It has a wide scope of: 16x2 mm; 20x2mm; 25x2mm; 25x2.5mm; 26x3mm

Flat design facilitates easy insertion into flattened pipes, efficiently ejecting cut material externally to prevent internal pipe contamination.

Equipped with a comfortable, ergonomic plastic handle, it ensures a pleasant and efficient working experience.

Possible applications for pipes: Comap, Herz, QIK, CosmoPEX, Rofix, KAN, Arka, PipeLife, Giacomini, Prandelli, Tweetop, Perfexim, Frankische, Goshe, US Metrix, Solter, IBP, Immergas, InstalComplex, Invena, Sanha, Skalar, Viessman and others

190

ARM FOR PIPE DECOILER WITH EYELET



Shears are designed for automatic cutting PE, PEX, PERT, AL-PEX, AL-PERT pipes up to 42 mm in diameter. The wedge-shaped blade ensures effortless cutting.

Rigid and durable plastic body.

Retracting the blade by tilting the handle allows one-handed operation

180 - 184

EXTERNAL BENDING SPRINGS FOR MULTILAYER PIPES



Used to obtain a smaller bending radius without bending and narrowing the pipe cross-section. Springs are made of wire with a square cross-section with specially rounded edges.

Ensure that the shape is not reproduced on the inner surface of the pipe.

Suitable for bending multilayer pipes also of the PEX-AL-PEX type.

Material galvanized steel.

Length is 600mm.

SGI CODE	OUTHER DIAM.	WALL THICKNESS	PACKAGING/ BAG
180	16 mm	2 mm	5 pieces
181	20 mm	2 mm	2 pieces
182	20 mm	2,25 mm	2 pieces
183	25/26 mm	2,5/3 mm	2 pieces
184	32 mm	3 mm	2 pieces

185 - 189

INTERNAL BENDING SPRINGS FOR MULTILAYER PIPES



Used to obtain a smaller bending radius without bending and narrowing the pipe cross-section. Springs are made of wire with a square cross-section with specially rounded edges.

Ensure that the shape is not reproduced on the inner surface of the pipe.

Suitable for bending multilayer pipes also of the PEX-AL-PEX type.

Material galvanized steel.

length is 600mm.

SGI CODE	OUTHER DIAM.	PACKAGING/ BAG
185	16 mm	10 pieces
186	20 mm	5 pieces
187	25 mm	5 pieces
188	26 mm	2 pieces
189	32 mm	1 pieces

1850C & 1950S

DUCT TAPE



1850C – 50mt red standard version

1950S – 50mt grey strong version



Material polyester cotton fibres embedded in the tape

Adhesion to steel for angle 180 degrees 25 N/cal

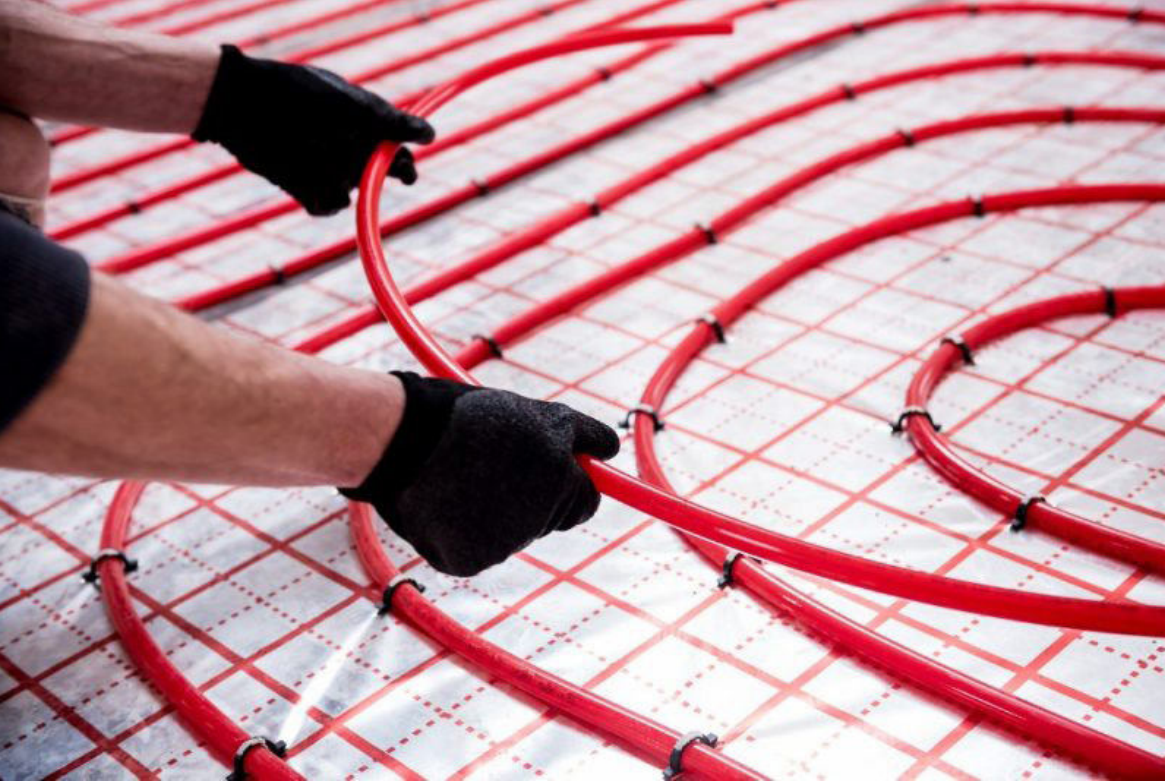
Elongation at break (extensibility) 10%

Film thickness PE 65 µm

Total thickness 110 µm

Resistance to temperature 60 degrees

Type of glue hot-melt

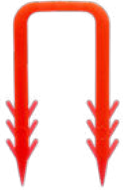


MANUAL CLIPS

Manual Clips (codes 14811 & 16611) anchor RAIL systems or pipes directly to floors, with lengths of 48mm and 66mm to suit insulation thickness. Crafted from red polypropylene for easy visibility, they offer durability and ease of use. The cavalotto-type clip (code 1400) secures pipes on system boards, featuring a bridge design for enhanced pipe stability. Additionally, our ground-screw clips (code 1460) ensure firm pipe fixation to both insulation and floor, stabilizing the piping system efficiently.

14811

MANUAL CLIPS 48MM



Material Polypropylene ; colour red

Length 48 mm → insertion depth 30 mm

Dedicated for pipe diameters \varnothing 14,16,18,20mm

Fixing method → manual pressure to the ground for mounting RAIL system (code 1300)

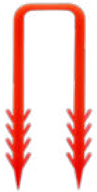
Packaging: single pack bag 100 pcs / multi pack 50 bags x 100 pcs

Pallet: 1200 bags / 24 multi packs x 50 bags

Pallet dimension: 1200x800x220mm ; gross weight 210 kg

16611

MANUAL CLIPS 66MM



Material Polypropylene ; colour red

Length 66 mm → insertion depth 48 mm

Dedicated for pipe diameters \varnothing 14,16,18,20mm

Fixing method → manual pressure to the ground for mounting RAIL system (code 1300)

Packaging: single pack bag 200 pcs / multi pack 25 bags x 200 pcs

Pallet: 600 bags / 24 multi packs x 25 bags

Pallet dimension: 1200x800x220mm ; gross weight 245 kg

1400

STRADDLE CLIP / CLIP CAVALLOTTO



Material Polypropylene ; colour black

Length 90 mm → insertion depth 48 mm

Dedicated for pipe diameters \varnothing 14,16,18,20mm

Fixing method → manual pressure of pipe to the ground to immobilize it

Packaging: single pack bag 100 pcs / multi pack 25 bags x 100 pcs

Pallet: 500 bags each 100 pcs → 24 multi packs

Pallet dimension: 1200x800x200mm ; gross weight 180 kg

1460

CLIP SCREWED IN ISOLATION



Material Polypropylene ; colour red

Length 60 mm → insertion depth 27 mm

Dedicated for pipe diameters \varnothing 14,16,18,20mm

Fixing method → manual pressure of pipe to the ground to immobilize it

Packaging: single pack box 50 pcs / multi pack 20 x box 50 pcs

Pallet: 480 boxes each 50 pcs = > 24 multi packs

Pallet dimension: 1200x800x200mm ; gross weight 190 kg



WIRE MESH **CLIPS**

Wire mesh clips are used to fix heating pipes directly on the reinforcing mesh surface. Clips fixation point to the mesh is done manually with a click or with a help of tacker gun -> see SGI code 105/106/107, just like connecting the pipe to the clip as well. Such a system guarantees a simple and quick installation of surface heating with a minimum of components. Clips are made of polypropylene, are adapted to the thickness of the mesh of 2-3mm. From available wire mesh clips there is a possibility of mounting pipes with a diameter of 16, 17 or 20mm.

116311

WIRE MESH CLIPS 16MM



Material Polypropylene; colour black

Length 35mm, width 6mm, height 24 mm

Dedicated for pipe diameters \varnothing 16 mm

For reinforced mesh of 2-3mm thickness

Assembly method → manual pressure of the clip to the mesh, then push the pipe into the inside of the clip with a click or with tacker gun

Packaging: single pack bag of 500 pieces (10x 50pcs taped together) / multi pack 10 bags

Pallet: 24 multi packs

Pallet dimension: 1200x800x180mm; gross weight 140 kg

117311

WIRE MESH CLIPS 17MM



Material Polypropylene; colour black

Length 35mm, width 6mm, height 24 mm

Dedicated for pipe diameters \varnothing 17 mm

For reinforced mesh of 2-3mm thickness

Assembly method → manual pressure of the clip to the mesh, then push the pipe into the inside of the clip with a click or with tacker gun

Packaging: single pack bag of 500 pieces (10x 50pcs taped together) / multi pack 10 bags

Pallet: 24 multi packs

Pallet dimension: 1200x800x180mm; gross weight 140 kg

120311

WIRE MESH CLIPS 20MM



Material Polypropylene; colour black

Length 35mm, width 6mm, height 24mm

Dedicated for pipe diameters \varnothing 20 mm

For reinforced mesh of 2-3mm thickness

Assembly method → manual pressure of the clip to the mesh, then push the pipe into the inside of the clip with a click or with tacker gun

Packaging: single pack bag of 500 pieces (10x 50pcs taped together) / multi pack 10 bags

Pallet: 24 multi packs

Pallet dimension: 1200x800x180mm; gross weight 160 kg



RAILS FOR UNDERFLOOR HEATING

The RAIL floor heating is a universal product, widely used in floor and wall heating. It is made of a mixture of two materials from the polypropylene group, what ensures that it is flexible in the place where the pipes are set, and at the same time strong, resistant to breaking and crushing. Thanks to a special system of fastening one rail to another, they can be combined into long strings depending on the needs; which is a quick and convenient solution, especially for large areas. Rails can also be easily cut to smaller lengths. The minimum pipe spacing is 50mm; the maximum diameter of the pipes that can be installed on that system is 14-20 mm. There are available three types of rails, differentiated depending on the type of mounting to the ground. Rail mounted with manual clips (see code 14811; 14866); rail with self-adhesive tape glued directly to the ground and rail with a hook anchored to the ground.

1300

RAIL FOR UNDERFLOOR HEATING



Material Polypropylene; colour black

Length 1000 mm/2000 mm (code 1302)

Dedicated for pipe diameters 14mm - to 20mm

Spacing of pipes in the assembly (handle spacing) min every 50mm

Spacing of grooves for easy shortening every 100mm

Ground mounting method → manual clip 14811; 16611, screws

Packaging (1300): single box of 100 pieces of 1mt / pallet: 26 boxes of 100 pieces = 2.600 meters

Pallet dimension (1300): 1200x800x180mm; gross weight 480 kg

Packaging (1302): single box of 25 pieces of 2mt / pallet: 50 boxes of 25 pieces x 2mt = 2.500 meters

Pallet dimension (1302): 1200x800x180mm; gross weight 480 kg

1350

RAIL FOR UNDERFLOOR HEATING WITH HOOKS



Material Polypropylene; colour black

Length 1000 mm/2000 mm (code 1352)

Dedicated for pipe diameters 14mm - to 20mm

Spacing of pipes in the assembly (handle spacing) min every 50mm

Spacing of grooves for easy shortening every 100mm

Ground mounting method → manual clip 14811; 16611, screws

Packaging (1350): single box of 100 pieces of 1mt / pallet: 26 boxes of 100 pieces = 2.600 meters

Pallet dimension (1350): 1200x800x180mm; gross weight 480 kg

Packaging (1352): single box of 25 pieces of 2mt / pallet: 50 boxes of 25 pieces x 2mt = 2.500 meters

Pallet dimension (1352): 1200x800x180mm; gross weight 480 kg

1360

RAIL FOR UNDERFLOOR HEATING



Material Polypropylene; colour black

Length 1000 mm/2000 mm (code 1360)

Dedicated for pipe diameters 14mm - to 20mm

Spacing of pipes in the assembly (handle spacing) min every 50mm

Spacing of grooves for easy shortening every 100mm

Ground mounting method → manual clip 14811; 16611, screws

Packaging (1360): single box of 50 pieces of 1mt / pallet: 26 boxes of 50 pieces = 2.600 meters

Pallet dimension (1360): 1200x800x180mm; gross weight 480 kg

Packaging (1362): single box of 25 pieces of 2mt / pallet: 50 boxes of 25 pieces x 2mt = 2.500 meters

Pallet dimension (1362): 1200x800x180mm; gross weight 480 kg



FLOOR **HOOKS**

Floor hooks are designed for fixing pipes in water and underfloor heating systems. They are available in single or double product version as well as in two lengths options: 70mm and 100mm. This is a standard solution granting additional support and stabilization of pipes in underfloor heating system. Floor hooks are fixed to the floor made of concrete, brick, hollow blocks or cellular concrete. They are dedicated for installation inside buildings. Material from which they are made - polypropylene, ensures high resistance to breaking, crushing or cracking.

1420

SINGLE FLOOR HOOK 70MM



Material Polypropylene; colour white

Diameter 10mm, high 70 mm

Dedicated for pipe diameters: \varnothing 14,16,17,18, 20, 22, 25mm

Packaging: single pack box 200 pcs / multi pack 12 x box 200 pcs

Pallet: 288 single boxes each 200 pcs → 24 multi packs

Pallet dimension: 1200x800x200mm

Gross weight: 450 kg

1430

SINGLE FLOOR HOOK 100 MM



Material Polypropylene; colour white

Diameter 10mm, high 100 mm

Dedicated for pipe diameters: \varnothing 14,16,17,18, 20, 22, 25mm

Packaging: single pack box 200 pcs / multi pack 12 x box 200 pcs

Pallet: 288 single boxes each 200 pcs → 24 multi packs

Pallet dimension: 1200x800x200mm

Gross weight: 290 kg

1440

DOUBLE FLOOR HOOK 70MM



Material Polypropylene; colour white

Diameter 10mm, high 70 mm

Dedicated for pipe diameters: \varnothing 14,16,17,18, 20, 22, 25mm

Packaging: single pack box 200 pcs / multi pack 12 x box 200 pcs

Pallet: 288 single boxes each 200 pcs → 24 multi packs

Pallet dimension: 1200x800x200mm

Gross weight: 300 kg

1450

DOUBLE FLOOR HOOK 100MM



Material Polypropylene; colour white

Diameter 10mm, high 100 mm

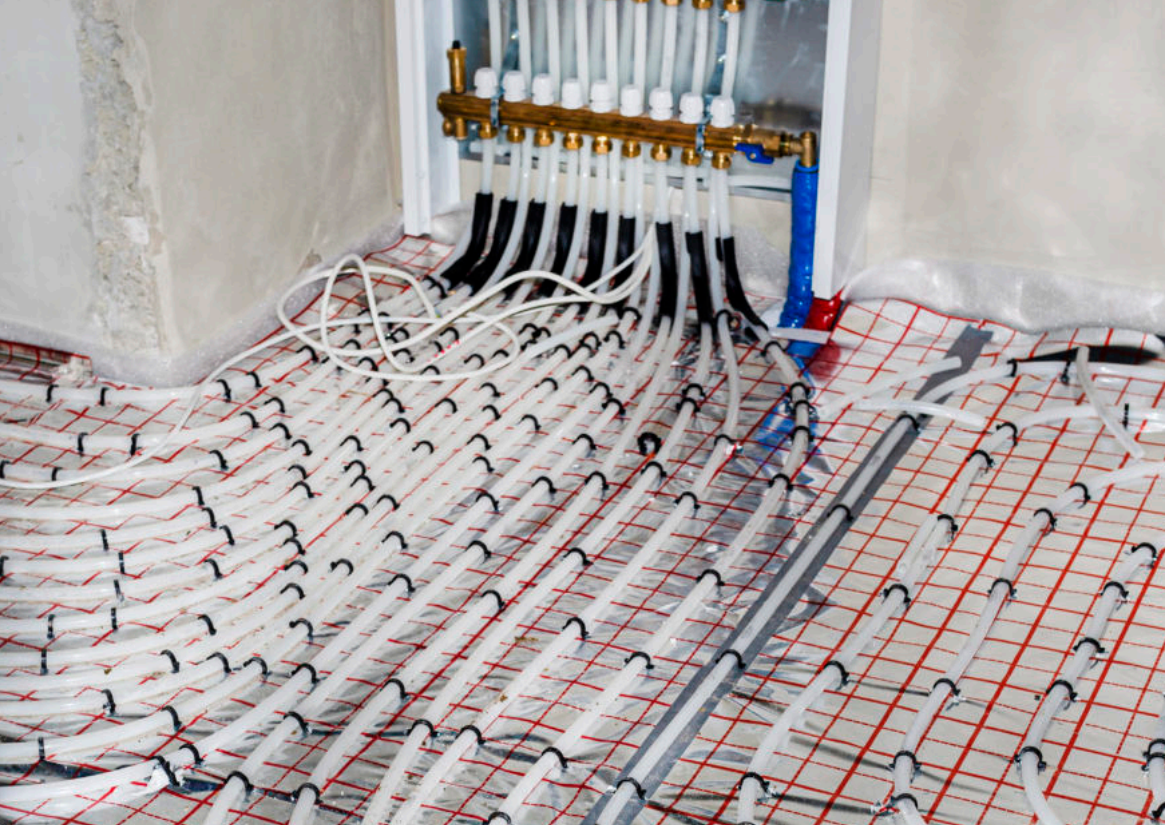
Dedicated for pipe diameters: \varnothing 14,16,17,18, 20, 22, 25mm

Packaging: single pack box 200 pcs / multi pack 12 x box 200 pcs

Pallet: 288 single boxes each 200 pcs → 24 multi packs

Pallet dimension: 1200x800x200mm

Gross weight: 345 kg



PIPE **BENDS**

Floor hooks are designed for fixing pipes in water and underfloor heating systems. They are available in single or double product version as well as in two lengths options: 70mm and 100mm. This is a standard solution granting additional support and stabilization of pipes in underfloor heating system. Floor hooks are fixed to the floor made of concrete, brick, hollow blocks or cellular concrete. They are dedicated for installation inside buildings. Material from which they are made - polypropylene, ensures high resistance to breaking, crushing or cracking.

1150

PIPE BEND 10-12 MM



Material Polyamide + fiber glass; colour black

For pipes diameter 10-12 mm

Length 130mm width 22mm height 25mm

Packaging: single pack box 25 pcs / multi pack 20 x box 25 pcs

Pallet: 400 single boxes each 25 pcs → 20 multi packs

Pallet dimension: 1200x800x220mm

Gross weight: 290 kg

1100

PIPE BEND 16-18 MM



Material Polyamide + fiber glass; colour black

For pipes diameter 16-18 mm

Length 160mm width 22mm height 25mm

Packaging: single pack box 25 pcs / multi pack 20 x box 25 pcs

Pallet: 400 single boxes each 25 pcs → 20 multi packs

Pallet dimension: 1200x800x220mm

Gross weight: 385 kg

1200

PIPE BEND 20-22 MM



Material Polyamide + fiber glass; colour black

For pipes diameter 20-22 mm

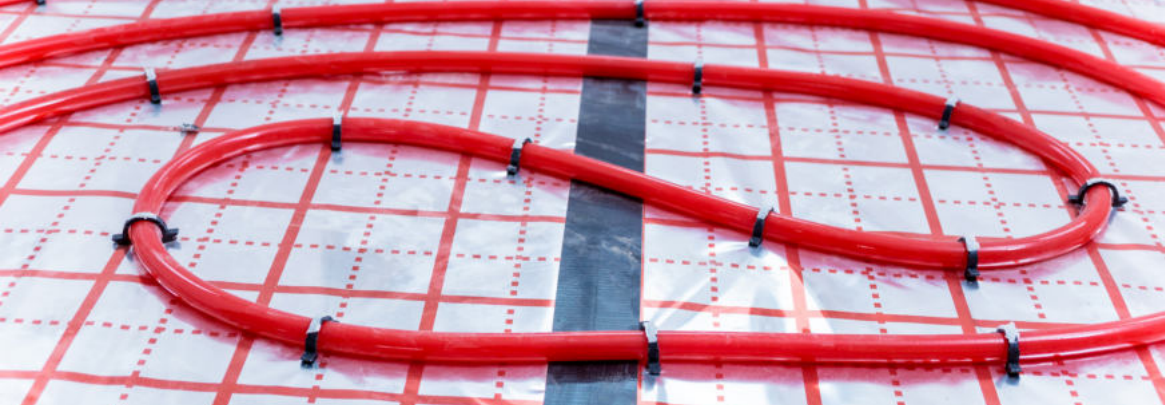
Length 150mm width 29mm height 30mm

Packaging: single pack box 25 pcs / multi pack 10 x box 25 pcs

Pallet: 200 single boxes each 25 pcs → 20 multi packs

Pallet dimension: 1200x800x220mm

Gross weight: 250 kg

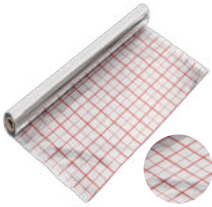


FOILS AND TEXTILES FOR UNDERFLOOR HEATING

Polyethylene insulating foil is dedicated for use under the floor heating system elements. It increases the heating efficiency of the system it serves by high reflection of thermal radiation generated from the installation. It also accelerates response time of the entire heating system. Foil perfectly protects polystyrene plates against moisture. The film is waterproof, non-absorbent and durable, which makes it perfect for anhydrite screed. On its surface there is a mesh print in the form of 5 cm squares, which makes it very easy to lay an underfloor heating system on its surface. Polypropylene textile in underfloor heating systems acts as an excellent anti-moisture layer and is an alternative to the use of insulating foil. The textile, thanks to its construction, has a higher mechanical strength than foil. It is an ideal solution when it is necessary to anchor the fixing of pipes for underfloor heating in the insulation more firmly. Aluminium reflective foil is the multilayer film consisting of one layer of metalized polypropylene film, polypropylene mesh and polyethylene film. This type of foil is designed to perform vapor barrier in the construction of roofs. The metalized layer reflects thermal radiation, preventing heat loss. Product is insulating barrier to water vapor and the wind. Such membranes can be used in all ventilated and non-ventilated roofs.

1690

POLYETHYLENE FOIL FOR UNDERFLOOR HEATING



Length 5m, width 1m, grammage 105q/m2

Material metalized polyethylene film

Thickness 90 µm

Colour silver with red grille 5x5cm

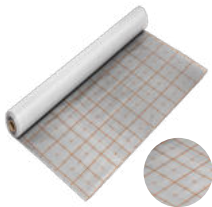
Packaging: roll 50mt / pallet 110 rolls

Pallet dimension: 1200x800x180mm

Gross weight 455 kg

1600

POLYPROPYLENE TEXTILE FOR UNDERFLOOR HEATING



Length 5m, width 1m, grammage 100q/m2

Material material polypropylene fibres

Thickness 100 µm

Colour silver with red grille 5x5cm

Packaging: roll 50mt / pallet 110 rolls

Pallet dimension: 1200x800x180mm

Gross weight 565 kg

269030

ALUMINIUM REFLECTIVE FOIL 90 CE 30M2



Length 20m, width 1,5m, grammage 90q/m2

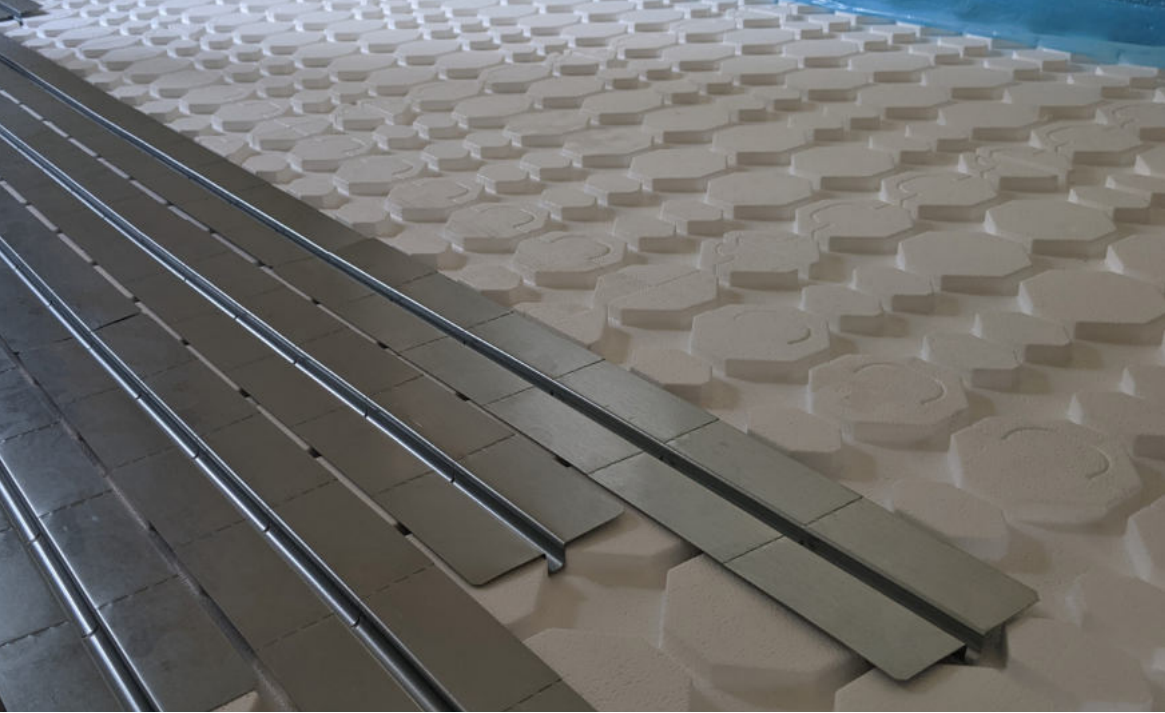
Material metallised vapour barrier membrane

Thickness 100 µm

Colour multilayer film consisting of one layer of metalized polypropylene film, polypropylene mesh and polyethylene film; colour silver **Packaging:** roll 50mt / pallet 110 rolls

Pallet dimension: 1200x800x180mm

Gross weight 660 kg



HEAT TRANSFER - **ALUMINUM PLATES**

Alu Plate heating panels are used in the installation of underfloor heating system in the so-called dry technology, means that no screed is required at system preparation and installation. Aluminium panels are laid directly on the insulation made of: EPS boards, acoustic boards or chipboards. Boards have special channels for mounting a pipe with a diameter range of 16-20 mm. Heat coming from pipe is speeded over the entire heating aluminium panel, thanks to which the speed and efficiency of the heated floor increase fast and significantly. Alu plates are available in one- and two-channel versions and in many variants of their width and length.

2202

HEAT TRANSFER ALU PLATE SINGLE



Dimensions: length 1000mm; width 120mm; thickness 0.5mm

Dedicated for pipe diameter: 16mm

Material: Aluminium

Packaging: single box 70 pcs/box → 20 boxes on a pallet = 1400 pcs

Pallet dimension: 1200x800x200mm

Gross weight 290 kg

2212

HEAT TRANSFER ALU PLATE DOUBLE



Dimensions: length 1000mm; width 390mm; thickness 0.5mm

Dedicated for pipe diameter: 16mm; pipe distance 200mm

Material: Aluminium

Packaging: single box 20 pcs/box → 20 boxes on a pallet = 400 pcs

Pallet dimension: 1200x800x200mm

Gross weight 360 kg



PIPE CONDUIT

Our pipe conduit shields underfloor heating pipes, offering mechanical protection against damage from material expansion and shrinkage. Ideal for sleeving pipes across expansion joints, or at entry/exit points through screed, it boasts high flexibility and resistance to chemicals and external pressures. Easy to install, it comes in 21 and 23mm outer diameters, in 50m coils, available in blue and red.

1721N (blue)
1721C (red)

PIPE CONDUIT 21 MM

Length of coil 50mt; **Outer diameter** 21mm; **Material** polypropylene
Packaging – 36 rolls / pallet

1723N (blue)
1723C (red)

PIPE CONDUIT 23 MM

Length of coil 50mt; **Outer diameter** 23mm; **Material** polypropylene
Packaging – 36 rolls / pallet



EDGE STRIPS

Crafted from LDPE polyethylene, our edge insulation strips are designed for creating wall/floor separations or expansion joints in large screed areas, enhancing thermal and acoustic insulation. Available in multiple configurations to suit project-specific needs – with or without collar (overlap) and adhesive options. Offered in 25 or 50m rolls, in blue or yellow, with standard dimensions of 150mm width and 8mm thickness. Custom dimensions available upon request.

SGI CODE	EDGE STRIP SIZE MM	LENGHT PER ROLL METERS	COLOUR	OVERLAP	ADHE-SIVE ON EDGE STRIP	DOUBLE ADHESIVE (ON OVERLAP & EDGE STRIP)
2410Z	8x150	25	yellow			
2410N	8x150	25	blue			
2450Z	8x150	50	yellow			
2450N	8x150	50	blue			
2400Z	8x150	25	yellow	X		
2400N	8x150	25	blue	X		
2440Z	8x150	50	yellow	X		
2440N	8x150	50	blue	X		
2425ZT	8x150	25	yellow	X	X	
2425NT	8x150	25	blue	X	X	
2450ZT	8x150	50	yellow	X	X	
2450NT	8x150	50	blue	X	X	
2425ZT2K	8x150	25	yellow	X	X	X
2425NT2K	8x150	25	blue	X	X	X
2450ZT2K	8x150	50	yellow	X	X	X
2450NT2K	8x150	50	blue	X	X	X



GYPSUM FIBER PANELS - PWG

Our GYPSUM fiber panels offer a modern alternative to traditional cement screed, ensuring minimal heating system thickness and low weight, akin to concrete's functionality. These panels efficiently absorb and distribute heat from underfloor pipes across their surface, also storing it effectively. Ideal for moist areas like bathrooms and kitchens, these eco-friendly, recyclable materials allow direct floor finishing without underlays. Their installation is quick, clean, and immediate, eliminating drying time unlike screed. Suitable for 10-12 mm pipe diameters, each panel weighs approximately 20kg/m².

SUPPLY GYPSUM FIBER PANEL



SGI CODE	NAME	LENGHT MM	WIDTH MM	THICKNESS MM	PIPE DISTANCE MM	WEIGHT KG
PWG01	supply panel	1200	600	18	100	15
PWG02	supply panel	1200	600	18	150	15

SUPPLY & RETURN PANEL



SGI CODE	NAME	LENGHT MM	WIDTH MM	THICKNESS MM	PIPE DISTANCE MM	WEIGHT KG
PWG03	supply & return panel	1200	600	18	100	15
PWG04	supply & return panel	1200	600	18	150	15

RETURN PANEL



SGI CODE	NAME	LENGHT MM	WIDTH MM	THICKNESS MM	PIPE DISTANCE MM	WEIGHT KG
PWG05	return panel	1200	600	18	100	15
PWG06	return panel	1200	600	18	150	15



WOOD FIBER PANELS - ETFP

Optimized for „dry“ construction methods, our Wood Fiber Panels provide a robust foundation for underfloor heating pipes where wet systems aren't feasible, like over wooden floors or in lightweight construction. These panels not only offer superior thermal and acoustic insulation with minimal height increase but also enhance the floor's thermal inertia by accumulating heat — a significant advantage over polystyrene solutions. Their quick, hassle-free installation process makes them ideal for 16mm diameter pipes, ensuring an efficient and effective heating system setup.

SUPPLY PANELS



SGI CODE	NAME	LENGHT MM	WIDTH MM	THICKNESS MM	PIPE DISTANCE MM	WEIGHT KG
ETFP01125	supply panel	1000	500	30	125	5,5
ETFP01150	supply panel	1200	600	30	150	5,5
ETFP01200	supply panel	1200	600	30	200	5,5

SUPPLY-RETURN PANELS



SGI CODE	NAME	LENGHT MM	WIDTH MM	THICKNESS MM	PIPE DISTANCE MM	WEIGHT KG
ETFP02125	supply-return panel	1000	500	30	125	5,5
ETFP02150	supply-return panel	1200	600	30	150	5,5
ETFP02200	supply panel	1200	600	30	200	5,5

RETURN PANEL



SGI CODE	NAME	LENGHT MM	WIDTH MM	THICKNESS MM	PIPE DISTANCE MM	WEIGHT KG
ETFP03125	return panel	1000	500	30	125	5,5
ETFP03150	return panel	1200	600	30	150	5,5
ETFP03200	return panel	1200	600	30	200	5,5

BLIND PANEL



SGI CODE	NAME	LENGHT MM	WIDTH MM	THICKNESS MM	PIPE DISTANCE MM	WEIGHT KG
ETFP07	blind panel	1000	500	30	-	5,5
ETFP08	blind panel	1200	600	30	-	5,5



CHIPBOARD PANELS

- MFP

Our eco-friendly Chipboard Panels are crafted from solid, wood-like materials, ideal for timber frame construction and renovations. Designed for easy laying over joists spaced at 400 or 600mm, these panels support aluminum channels on top for underfloor heating pipes, ensuring even heat distribution across the floor. The dry system benefits from a slim profile with panels just 22mm thick, compatible with 16mm diameter pipes, combining efficiency with minimal structural impact.

SUPPLY PANELS



SGI CODE	NAME	LENGHT MM	WIDTH MM	THICKNESS MM	PIPE DISTANCE MM	WEIGHT KG
MFP01	supply panel	1200	600	22	125	11,0
MFP03	supply panel	1200	600	22	150	11,0
MFP05	supply panel	1200	600	22	200	11,0

SUPPLY-RETURN PANELS



SGI CODE	NAME	LENGHT MM	WIDTH MM	THICKNESS MM	PIPE DISTANCE MM	WEIGHT KG
MFP02	supply-return panel	1000	600	22	125	11,0
MFP04	supply-return panel	1200	600	22	150	11,0
MFP06	supply panel	1200	600	22	200	11,0



MANIFOLD CABINETS

Integral to underfloor heating systems, our Manifold Cabinets encapsulate and conceal manifolds and pump sets within walls elegantly and functionally. These cabinets, crafted from white-painted, galvanized steel, ensure that installations remain accessible yet discreet. Available in two variants for either over or under plaster assembly, they provide a sleek, aesthetic finish while safeguarding the system components.

15001-15007

MANIFOLD CABINETS UNDER PLASTER



It is used to be mounted inside in a wall

Material galvanized steel sheet

Colour white

The rear wall is equipped with rails and screws dedicated for mounting the manifold

The side walls have openings for heating supply and return pipes

Cabinets feet ensure easy installation to the floor

Adjustable door is closed with a coin system

SGI CODE	CIRCUITS	WIDTH	HEIGHT	DEPTH	WEIGHT KG
15001	2-4	350	505-605	110-160	7,9
15002	5-6	450	505-605	110-160	8,2
15003	7-8	530	505-605	110-160	9,3
15004	9-10	680	505-605	110-160	10,6
15005	11-13	830	505-605	110-160	13,1
15006	14-16	1030	505-605	110-160	15,4
15007	17-18	1130	505-605	110-160	16,4

POSSIBILITY OF PRODUCTION MANIFOLD CABINETS FOR SPECIAL CUSTOMER DIMENSIONS !

15501-15507

MANIFOLD CABINETS UNDER PLASTER



It is used to be mounted to the wall

Material galvanized steel sheet

Colour white

The rear wall is equipped with rails and screws dedicated for mounting the manifold

Adjustable door is closed with a coin system

SGI CODE	CIRCUITS	WIDTH	HEIGHT	DEPTH	WEIGHT KG
15501	2-4	350	600	120	6,3
15502	5-6	450	600	120	7,0
15503	7-8	530	600	120	7,9
15504	9-10	680	600	120	9,7
15505	11-13	830	600	120	11,3
15506	14-16	1030	600	120	13,5
15507	17-18	1130	600	120	14,5

POSSIBILITY OF PRODUCTION MANIFOLD CABINETS FOR SPECIAL CUSTOMER DIMENSIONS !

1490

GUTTER CLIPS



Designed for anti-icing system installations, our Gutter Clips securely hold heating cables in downspouts, featuring a hole for fastening to stainless steel wires up to 2mm in diameter. Made from weather-resistant materials, they guarantee stable cable placement in gutters. Beyond utility, these clips are also ideal for hanging festive lights or decorations, offering a versatile solution for both protection against ice and seasonal adornment.

Material Polypropylene black

Packaging single pack bag 10 pieces / multipack 100 bags each 10 pieces

1491

SWIVEL FEET



Expertly crafted for optimal balance, our Swivel Feet deliver unmatched stability for machinery and tools. Utilizing premium materials for maximum durability and atmospheric resistance, the shaft is made of stainless steel with an M8 thread screw. The base, constructed from top-grade technopolymer, measures 80mm in diameter, ensuring broad application suitability and ease of installation. Ideal for both industrial and domestic settings, these swivel feet are designed to provide a solid, reliable base with minimal installation time.

Material Polyamide + fiber glass & stainless steel, colour black

Packaging single pack bag 10 pieces / multipack 100 bags each 10 pieces



underfloor heating components



SGI Heating Sp. z o.o.
ul. Sierocińska 10
59-220 Legnica
NIP 691-257-35-56

mobile +48 517 920 327
www.sgiheating.pl
info@sgiheating.pl